

STETSEP OIL SEPARATORS

SINGLE OR TWO STAGE UNITS AVAILABLE

Stetsep is a range of oil/water separators - capacities 1.0m³/hr to 10m³/hr - for installation within factories or establishments to ensure that the discharge consents are met. These units will handle large oil volumes on a continuous or intermittent basis .

Self-contained unit

Takes up to 100% oil loadings

Engineered solution for waste oil

Two-stage for maximum performance

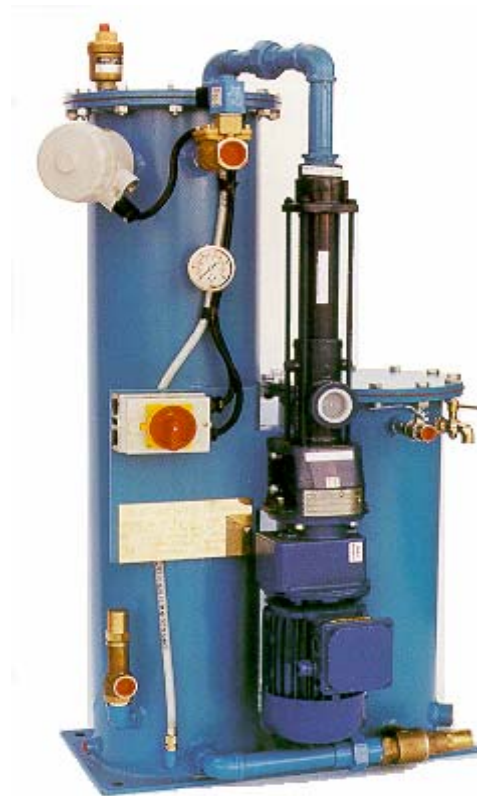
Standard and special sizes to suit

Easy maintenance, low running cost

Prpm under 15 for most applications

The Stetsep is a complete system, automatic in operation and includes an integral feed pump. With its compact overall dimension, the unit is ideally suited for restricted spaces/retrofitting, being able to be passed through most existing hatches and access doorways. Installation work for the system is minimal and can be undertaken by site engineers according to the installation instructions/drawings provided.

Whilst the Stetsep can remove free-oils from bilge water they are not certified to IMO Resolutions MEPC 60(33) or 107(49). For Heavy Fuel Oil (HFO) applications see our 'Stetcone' range.



1.0 m³ per hour Stetsep

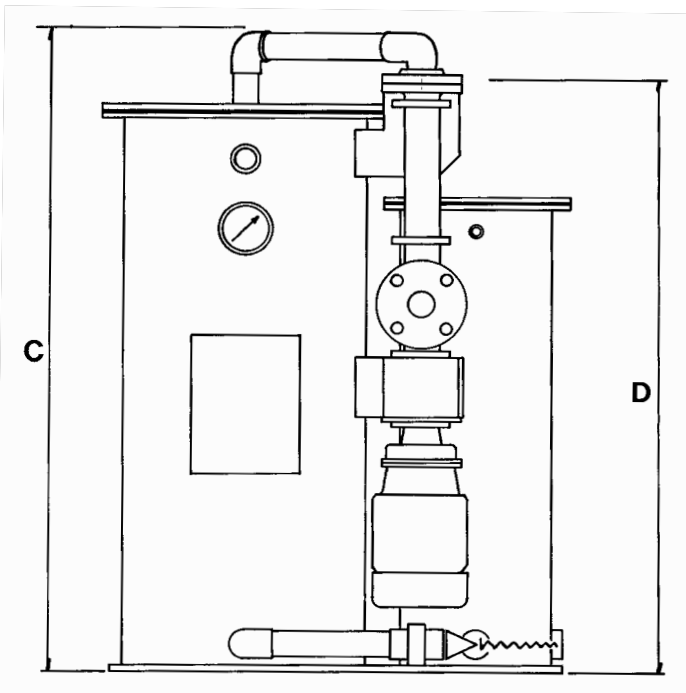
ADVANTAGES

- ◆ Economy in initial cost and maintenance
- ◆ Ease and speed of installation into areas where space and access is limited
- ◆ Efficiency in operation and separation
- ◆ Pre-wired and packaged for automatic operation

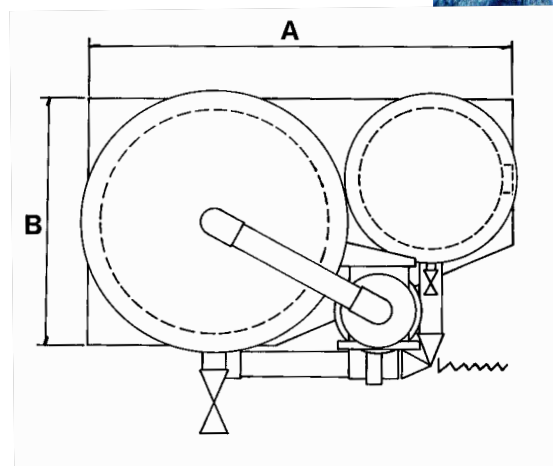
Standard Industrial "Stetsep" Separator Range Available:

Capacity m ³ per hour	1.0	2.5	5.0	10.0
Weight Empty - kgs	115	197	288	544
Weight Working - kgs	254	433	706	1381
'A' Length	609	851	1092	1473
'B' Width	292	508	660	915
'C' Overall Height	1207	1245	1400	1575
'D' Coalescer Withdrawal Height	825	1385	2032	1677
Inlet Connection	40	50	65	80
Outlet Connection	25	40	40	50

All flanged connections to BS 4504 PN10/16 or ANSI 150lb RF.
 All threaded socket connections BSP.
 Dimensions in millimetres.



Elevation



Plan

The Industrial "Stetsep" is based on a proven design, adapted from a marine based unit, but is not certified to IMO regulations for use on-board ship for bilge water applications.

- * Economy in initial cost and maintenance
- * Ease and speed of installation into restricted spaces
- * Handles 0% - 100% oils
- * Efficiency in operation and separation
- * Pre-wired and packaged for automatic operation
- * Units available for operating temperatures to 85°C

The "Stetsep" is complete with the following main components: -

- * First Stage Gravity Separator with non-corrodable internal pack
- * Second Stage Coalescer Separator
- * Integral, self-priming, positive displacement type pump
- * Interstage piping between first and second stages
- * Pressure relief valve, pressure gauge, test points and air eliminator
- * All mounted on flat baseplate with holes for holding-down bolts
- * Automatic Oil Discharge system that discharges oil at about 0.5bar
- * Extras available - Oil Content Alarms, DOL Starters, ATEX Electrics



Stetfield Separators Limited

Parkengue,
 Kernick Business Park,
 Penryn, Cornwall, TR10 9EP
 United Kingdom
 Tel: +44 (0)1326 562635
 Fax: +44 (0)1326 563316

Web Site: www.stetfield.com
 email: sales@stetfield.com