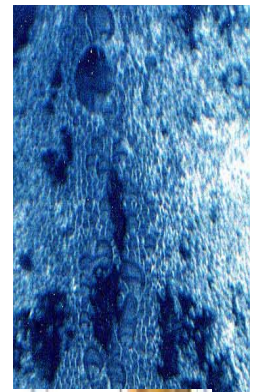


# STETMELLA

## Lamella Settler



### APPLICATIONS

Primary settlement of wastewater, final clarification of biologically treated wastewater, electrocoagulation discharge, surface water run-off, industrial sites, drinking water purification etc. In fact, any place where contamination of liquid with solids is a problem. The units are often used as pre-treatment to further processes and should be selected where especially stringent effluent requirements have been specified, in environmentally sensitive areas or where the risk of solids contamination to further processes will have significant effects.

### OPTIONS & ACCESSORIES

The following optional features are available for all settlers: integral coagulant and flocculent mixing tanks, clarified water pumping well, extension of free board for below ground installation, handrail, access ladder and flooring, sludge discharge pipes, sludge discharge pumps or conveyors and stainless steel or non-metallic materials of construction.

A range of complementary equipment is also available to facilitate installation and operation including: feed pumps, recovered sludge pumps, clarified water pumps, turbidity meters, pack removing frame and control equipment for motors and other ancillary items.



Stetmella SM75 settler with integral chemical mixing tank and clarified water discharge tank.



### RANGE

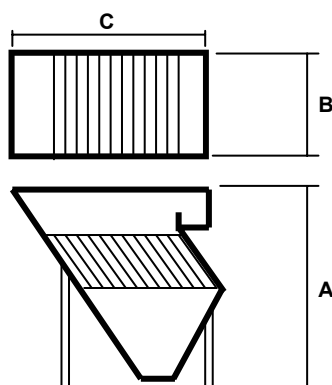
Stetmella is a range of solids clarification and thickening equipment in a standard format comprising conical hopper section tanks with internal flow distributors.

The equipment utilises Lamella Plate technology. This basic building block can be adapted to a wide variety of mechanical configurations and process designs.

### SPECIAL DESIGNS

Stetfield Separators specialise in the design and manufacture of purpose-built units to suit individual applications as well as providing our full range of standard units. Please contact us to discuss individual applications.

### APPROXIMATE DIMENSIONS



Model No.	SM6	SM15	SM30	SM45	SM60	SM75	SM90	SM120
Flowrate (m <sup>3</sup> /h)	2	4	8	12	16	20	25	30
Actual area (m <sup>2</sup> )	16	32	64	96	128	160	192	240
Projected area (m <sup>2</sup> )	8	16	32	48	64	80	96	120
A (mm)	2700	2700	2700	3200	3900	3900	4050	4050
B (mm)	1250	1400	1600	1870	2200	2800	2800	3200
C (mm)	1870	2100	2650	3050	3800	4000	4900	4900
Static wt (kg)	800	1000	1780	2500	3700	5000	6000	7100
Dynamic wt (kg)	2100	3200	6000	11000	16000	23000	28000	33200

AT ONE WITH SEPARATION TECHNOLOGY

## SOLIDS SETTLING APPLICATIONS

The Stetmella is primarily used for *Clarification* or *Thickening* applications involving the removal of suspended particles from a liquid stream via gravity settling. Clarification normally refers to the removal of solids from a relatively dilute process stream. Thickening is used to increase the concentration of solids in a process stream.

Enhanced sedimentation characteristics are utilised in our Stetmella range of settlers. The plates are arranged in Lamella fashion to provide larger passages for the waste and avoid blockage where large volumes, or a lack of mobility of the settled solids, occur.

Units can be provided with integral coagulant and flocculent mixing tanks where additional chemical treatment of the solids particles is required.



Stetmella with integral chemical mixing tanks

## LARGE CAPACITY PLANTS

The standard Stetmella range provides capacities up to a nominal 30m<sup>3</sup>/h. For capacities above this level, the modules can be combined in parallel or in-series to create much larger systems.

These larger units can be provided as stand alone units for installation either above ground or for dropping into a prepared foundation and backfilled, as required. Alternatively, sets of internals can be provided for building into concrete sumps.

We can supply a full kit of parts for in-ground concrete sumps, i.e. lamella plate packs, V-notch weirs, flow distributors, support frames etc. These units can be supplied for flowrates of 1m<sup>3</sup>/h to 1000m<sup>3</sup>/h



Typical V-Notch Launder Channels on 20m<sup>3</sup>/h unit

## FEATURES

Fabricated in substantial stainless steel, or mild steel sheet with two-pack epoxy paint finish for corrosion prevention. GRP units are also readily available. Certificates of Conformity and Hydraulic tests are provided as standard.

Stetmella's include an integral flow distributor, a Lamella plate pack with a lifting bar for ease of removal, a V-Notch Launder channel, tank lifting lugs, a settled sludge discharge port. Plates are available in Polypropylene as standard with stainless steel or GRP available as options.

Where access ladders and top flooring are provided, access points are available as required and the floor may be fully bolted, sealed and vented for explosion-proof installations. Where loose covers are specified, these are interlocked to prevent rainwater ingress. All handrails and ladders are in accordance with British Standards.

Whilst most units are expected to be installed above ground, the design is suitable for in-ground location. It is suggested that the units be positioned on a dry lean mix base and backfilled with dry lean concrete. To prevent distortion, they should be filled with water during backfilling. The inlet and outlet connections can be adapted as required to suit various drain fittings.



### Stetfield Separators Limited

Parkengue,  
Kernick Industrial Estate,  
Penryn, Cornwall, TR10 9EP  
United Kingdom  
Tel: +44 (0)1326 562635  
Fax: +44 (0)1326 563316

Web Site: [www.stetfield.com](http://www.stetfield.com)  
email: [sales@stetfield.com](mailto:sales@stetfield.com)